

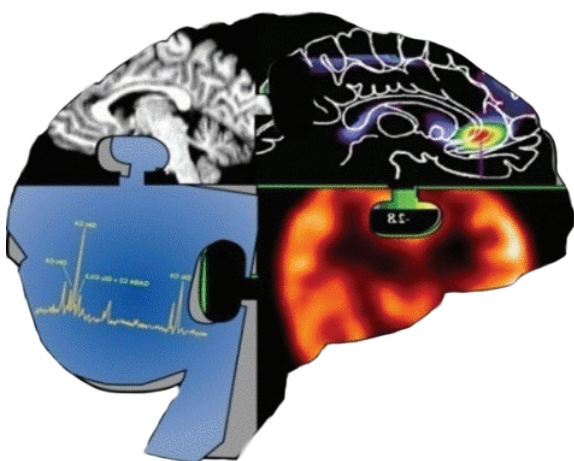
**E**stablishing  
**M**oderators and



**B**iosignatures of  
**A**ntidepressant  
**R**esponse in  
**C**linical care

- Innovative new NIMH-funded research study seeks to determine how to select optimal treatment for depression based individual biology.
- This study includes advanced magnetic resonance imaging (MRI), “brain-wave” testing (EEG) and sophisticated behavioral testing, as well as genetic analysis.
- All participants receive a comprehensive and psychiatric evaluation and psychiatric visits with a Columbia University faculty psychiatrist at no cost for six months.

- Participants are amply compensated for the time required to complete the clinical and biological testing.
- If you are between the ages of 18 and 65 and in good physical health, call the Depression Evaluation Service at Columbia University for further details or to arrange a screening appointment.





COLUMBIA UNIVERSITY  
MEDICAL CENTER

Department of  
Psychiatry



Depression  
Evaluation Service



Phone:  
212-543-5734  
[www.depression-nyc.org](http://www.depression-nyc.org)



# Depression Evaluation Service

**All inquiries and treatment records are  
strictly confidential.**

The content of this brochure has been approved  
by the New York State Psychiatric Institute  
Institutional Review Board.



# Depression Evaluation Service

*New York State  
Psychiatric Institute*

## *Depression Evaluation Service - Uptown*

1051 Riverside Drive  
Suite 3300

New York, NY 10032

(212) 543-5734

[www.depression-nyc.org](http://www.depression-nyc.org)

Email: [desdesk@pi.cpmc.columbia.edu](mailto:desdesk@pi.cpmc.columbia.edu)

2 blocks west of the A, C and 1 trains at  
168th Street Station

M5 Bus Stop on Broadway

1 block west of M4 Bus Stop on  
Fort Washington Avenue



## *Depression Evaluation Service - Midtown*

1775 Broadway, Suite 1403

New York, NY 10019

(212) 316-2364

[www.DepressionNY.com](http://www.DepressionNY.com)

Subway: 1, A, B, C, D, N, R