



HOPE FOR DEPRESSION RESEARCH FOUNDATION



Sandy Heine, Dorothy Kohl and Judy Messing

Celebs turn out for group's debut

Dominick Dunne, Lorraine Bracco, Chuck Scarborough are special guests.



Lori Gendelman and Catherine Adler

The Hope For Depression Research Foundation announced the launch of its research initiative at its first-ever Palm Beach luncheon.

The Hope Inaugural Luncheon took place March 28 at "Hope" Pavilion — renamed for the day in honor of the luncheon — at The Mar-a-Lago Club.

Audrey Gruss, Catherine Adler, Jackie Drake, Lori Gendelman and Lis Waterman were chairwomen of the event. Gruss founded the the organization a year ago in honor of her mother, Hope, who suffered from clinical depression.

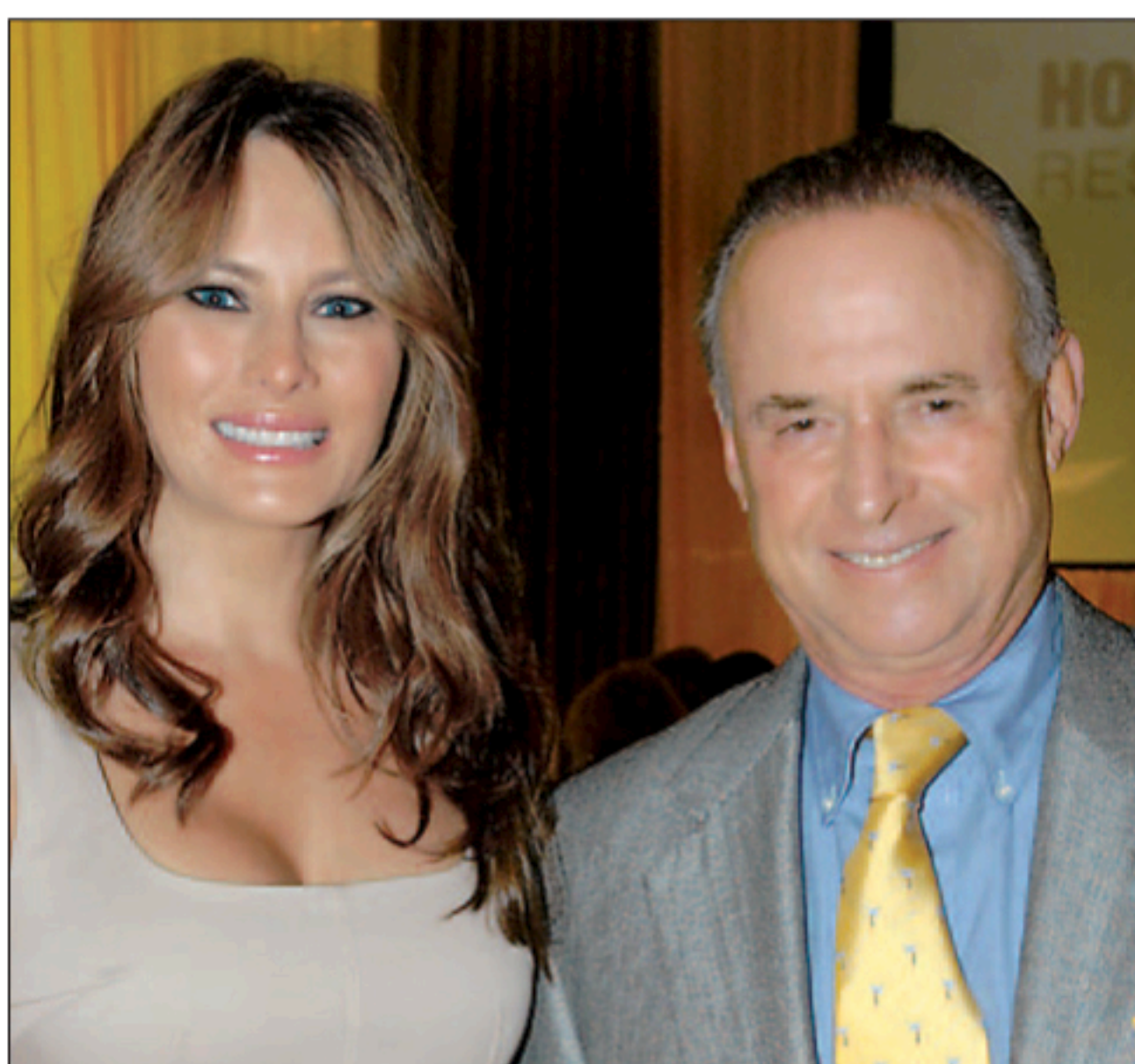
The afternoon included a reception, luncheon, and special guests **Dominick Dunne, Lorraine Bracco and Chuck Scarborough.**

HDRF was initially funded by private contributions from The Audrey and Martin Gruss Foundation, which will continue to underwrite all of HDRF's administrative expenses, so that every dollar raised will go directly to research.

HDRF's mission is to fund scientific research into the origins, diagnosis, treatment and prevention of depression and related disorders, with the ultimate goal of finding a cure.



Jackie Drake, Lorraine Bracco and Lis Waterman



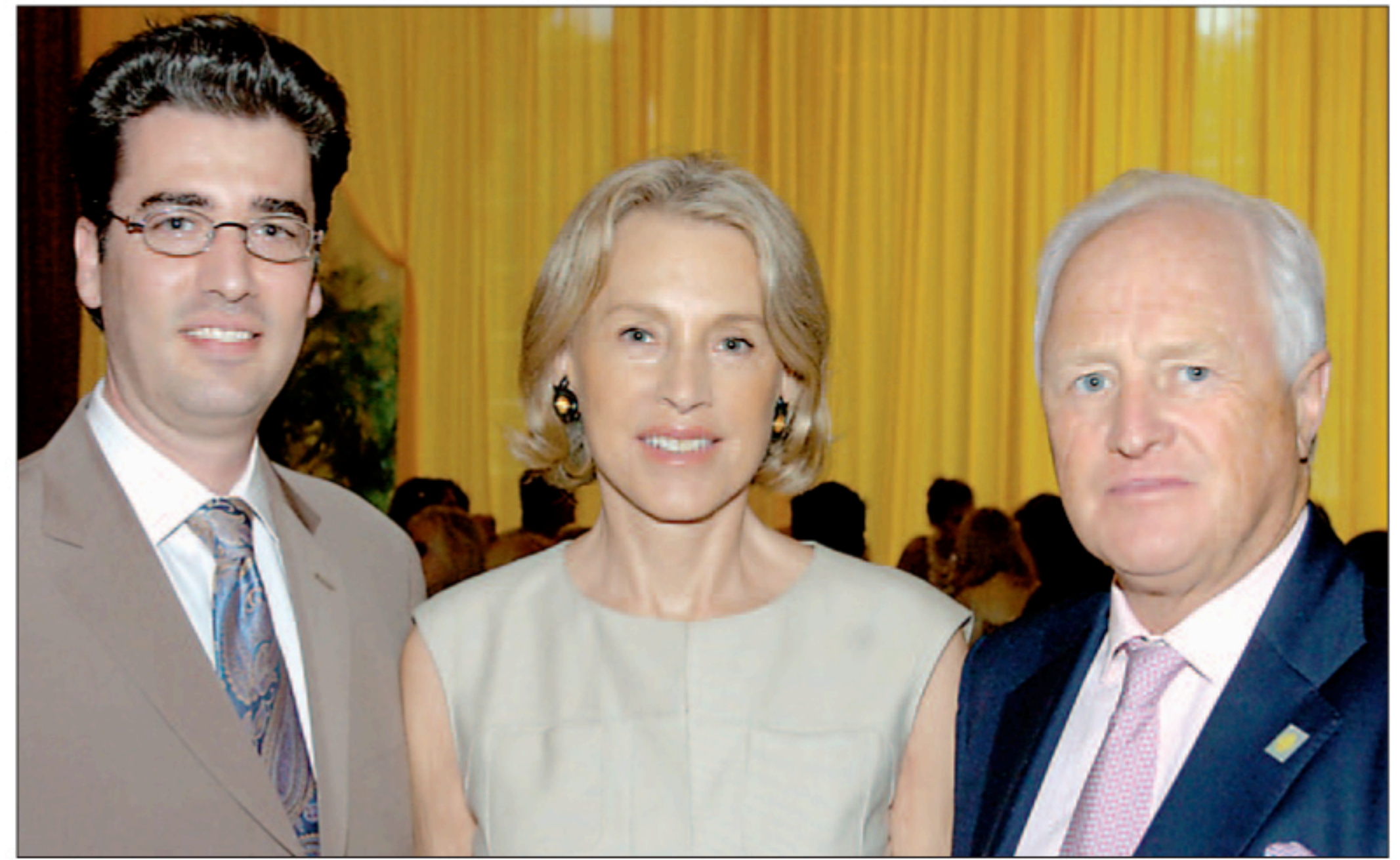
Melania Trump and Martin Gruss



Chuck Scarborough, Audrey Gruss and Dominick Dunne



Robbi Toll, Nancy Brown and Cobey Rapaport



Craig Dickman with Luce and Winston Churchill



Sara Fabrikant and Roberta Bogen



Kathy Bleznak, Jan Willinger and Sondra Mack



Dr. Peter Freed and Maggie Zellner